

B AC Motors

2 Pole Motor 150W(□ 90mm)

150W

2 Pole Motor
150W(□ 90mm)

Motor Specification

Model		Output W	Voltage V	Frequency Hz	Poles	Duty	Starting Torque		Rated Load			Capacitor μF / VAC	
Lead Wire Type	Terminal Box Type						kgfcm	N.m	Speed r/min	Current A	Torque kgfcm N.m		
9IDD3(G)-150F-A	9IDD3(G)-150F-AT	150	3φ 220	50	2	Cont.	13.91	1.391	2700	0.83	5.41	0.541	-
				60			11.08	1.108	3200	0.75	4.57	0.457	
				50	2	Cont.	14.97	1.497	2700	0.91	5.41	0.541	
				60			11.97	1.197	3200	0.80	4.57	0.457	
9IDD4(K)-150F-A	9IDD4(K)-150F-AT	150	3φ 380	50	2	Cont.	14.38	1.438	2700	0.44	5.41	0.541	-
				60			11.48	1.148	3200	0.41	4.57	0.457	
				50	2	Cont.	15.59	1.559	2700	0.49	5.41	0.541	
				60			12.56	1.256	3200	0.43	4.57	0.457	
9IDD5(L)-150F-A	9IDD5(L)-150F-AT	150	3φ 415	50	2	Cont.	14.02	1.402	2700	0.44	5.41	0.541	-
				60			11.27	1.127	3200	0.40	4.57	0.457	
				50	2	Cont.	15.52	1.552	2700	0.48	5.41	0.541	
				60			12.51	1.251	3200	0.44	4.57	0.457	

1) Enter the phase & voltage code in the place * within the motor model name.

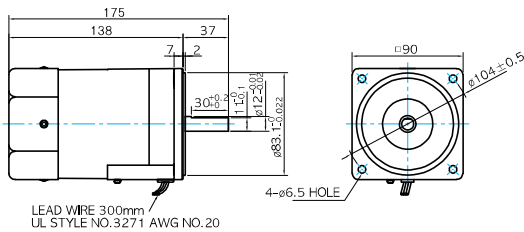
2) The phase & voltage code G, K, L contain a built-in thermal protector.

* It is not possible to use an inverter for three phase 380~440V motor. When the inverter is used, the insulation of winding coil becomes hot and may cause damage to the motor.

Dimensions

LEAD WIRE TYPE

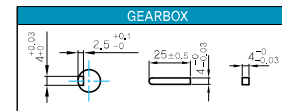
- MOTOR MODEL: 9IDD□-150F-A (GENERAL FAN)



MOTOR OUTPUT SHAFT

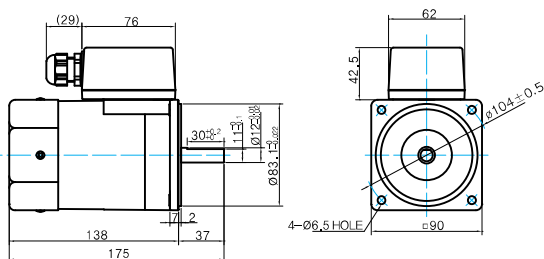
MODEL	SPEC
D-CUT TYPE	
KEY TYPE	

KEY SPEC



TERMINAL BOX TYPE

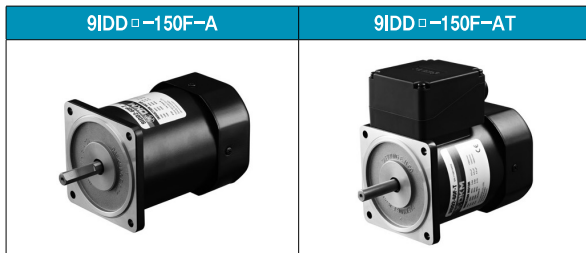
- MOTOR MODEL: 9IDD□-150F-AT (GENERAL FAN)



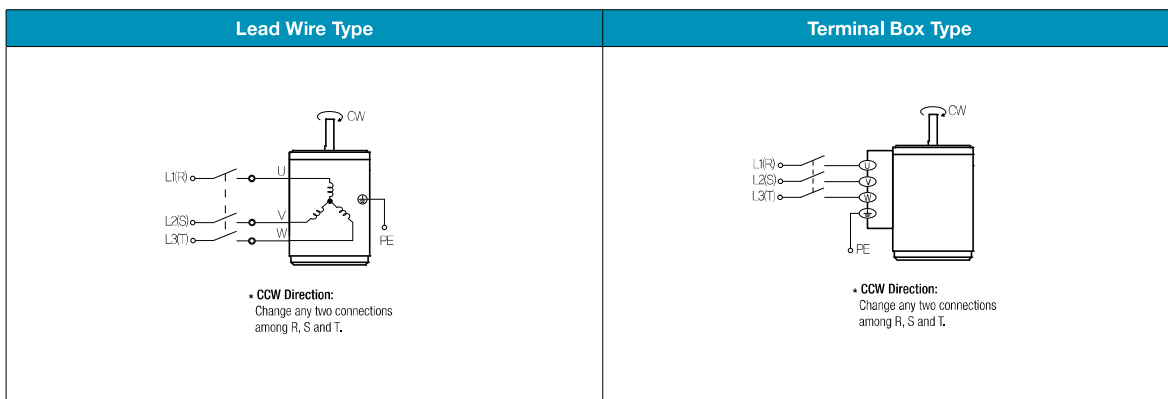
WEIGHT

PART	WEIGHT(kg)
MOTOR	3.05

Motor Images



Connection Diagrams



- 1) The direction of motor rotation is as viewed from the shaft end of the motor.
- 2) CW represents the clockwise direction, while CCW represents the counterclockwise direction.